



## Portable Type 2 EV Charger

15Amp Plug

# DATA SHEET

[evse.com.au](http://evse.com.au)

[sales@evse.com.au](mailto:sales@evse.com.au)

1300 406 210



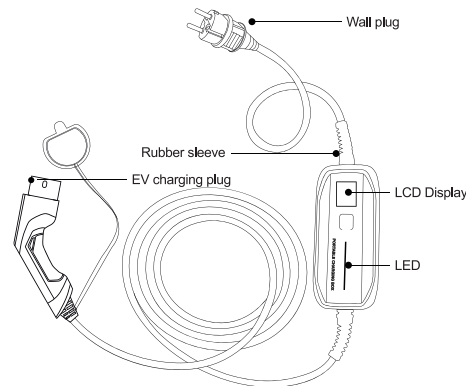
**CHARGE FASTER, DRIVE FURTHER**



## Features

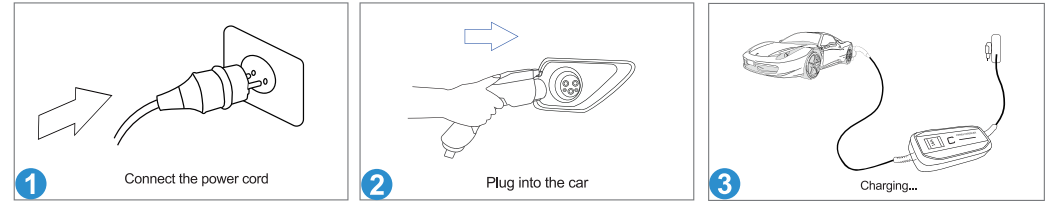
Portable Type 2 EV Charging Station with Australian Plug allows you to charge your electric vehicle via an Upgraded Australian 15A wall socket.

- Easy to operate with comprehensive protection system
- LCD screen
- Maximum power: 3.6 kW (adjustable 8/15 Amps)
- Light Weight 2.2kg
- Thermostat to measure temperature
- RCD inbuilt for electrical safety
- 5 metre length
- Meets international & Australian standards
- Auto charge recovery
- Overcurrent protection
- Warranty: 2 Years
- Operating Temperature: -25°C to +55°C



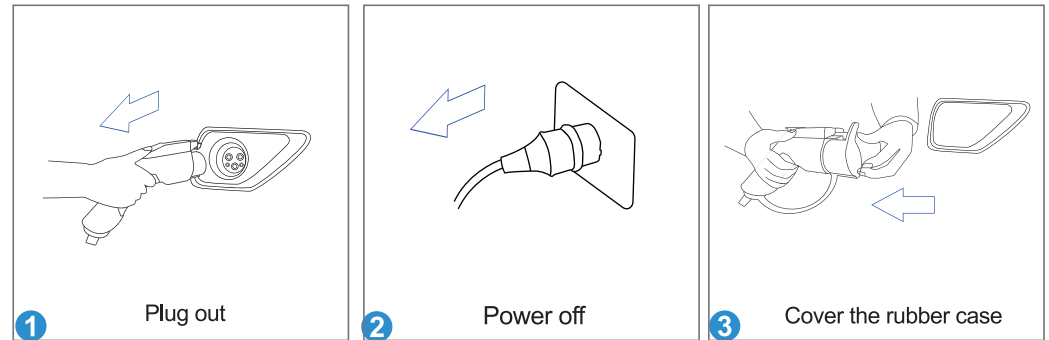
## How to Operate

### How To Start Normal Charge



1. Firmly insert the power plug into outlet. Ensure the socket is rated to a current of 15Amp. The Power Green LED light will illuminate
2. Remove cap & insert the vehicle connector into your vehicle inlet. Ensure the plug is fully seated into the vehicle. The Green LED will illuminate
3. The device starts charging automatically when the green LED light starts to blink.

### How To Stop Normal Charge



1. Disconnect the charging plug from the vehicle
2. Close protective cap of the EV charger plug
3. Disconnect power plug from the outlet