



## Portable Type 1 EV Charger

15Amp Plug

# DATA SHEET

[evse.com.au](https://evse.com.au)

[sales@evse.com.au](mailto:sales@evse.com.au)

1300 406 210



**CHARGE FASTER, DRIVE FURTHER**



## Features

Portable 15A Type 1 (J1772) EV Charger with Australian Plug. This portable EV charging station allows users to charge using an upgraded 15A Australian wall socket. At 3.6 kW of power, you can recharge at 20km/hour getting you out on the road sooner.

Easy to operate with comprehensive protection system

LED Live display

Maximum power: 3.6kW, 15 Amps (adjustable 8/15 Amps)

Light Weight 2.1kg

5m length

EV Cable Strain Relief Feature Insulated Terminal Design

Inbuilt RCD for your safety

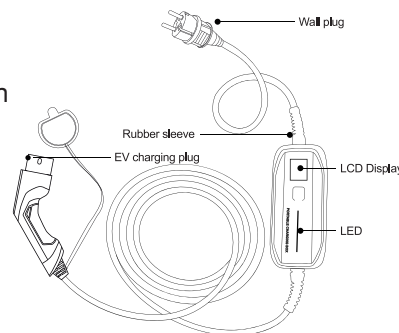
Meets international & Australian standards CE, TUV, UL

Auto charge recovery > Over current protection

Compatible with all EV's with a Type 1 plug

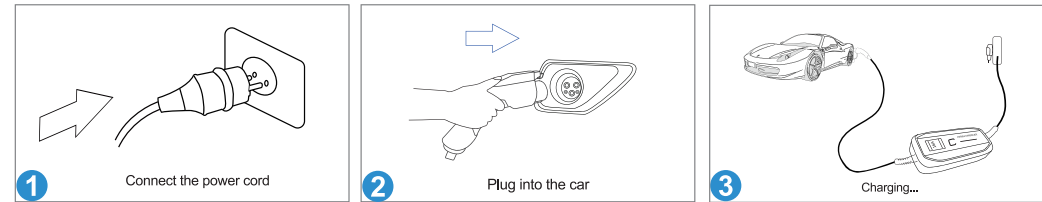
Warranty: 2 Year

Operating Temperature: -30°C to +50°C



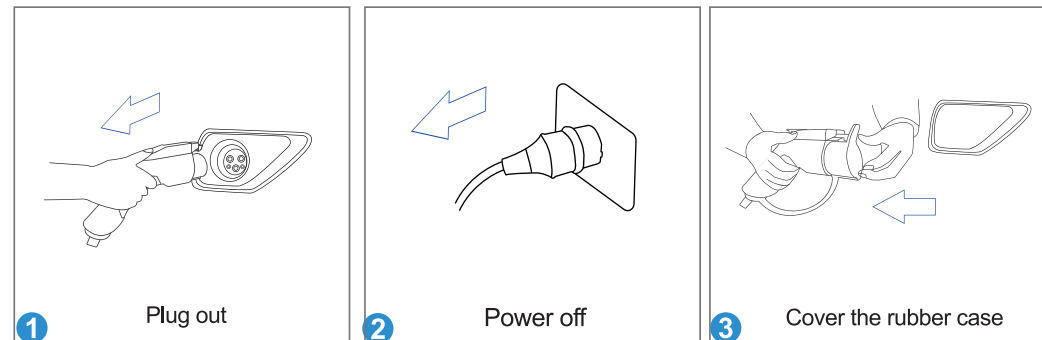
## How to Operate

### How To Start Normal Charge



1. Firmly insert the power plug into outlet. Ensure the socket is rated to a current of 15Amp. The Power Green LED light will illuminate
2. Remove cap & insert the vehicle connector into your vehicle inlet. Ensure the plug is fully seated into the vehicle. The Green LED will illuminate
3. The device starts charging automatically when the green LED light starts to blink.

### How To Stop Normal Charge



1. Disconnect the charging plug from the vehicle
2. Close protective cap of the EV charger plug
3. Disconnect power plug from the outlet