



## **KWIK Portable Type 2 Charger**

7kW, 32 Amp

# **DATA SHEET**

*[evse.com.au](http://evse.com.au)*

*[sales@evse.com.au](mailto:sales@evse.com.au)*

*1300 406 210*



**CHARGE FASTER, DRIVE FURTHER**



## Features

**KWIK Portable Type 2 Single Phase EV Charging Cable 7kW 32 Amp.**

**Compatible with all-electric vehicles and models**

Easy to operate with a comprehensive protection system

Charging power adjustable 2.3 – 7 kW to give you flexibility. (6Amp-32Amp)

Up to 5x faster than an ordinary domestic power socket

Flexible adjustment of the charging current with a button on the device.

Integrated residual current device (AC and DC detection, Type B characteristics) for your safety.

Type 2 connector Mennekes.

2-year warranty

Up to 7kw charging rate or approx. 40 km of range per hour

Smart LCD Screen details all charging information

Light Weight

5 meter EV cable length

Meets Australian & European standards

Temperature management for protecting the socket & EV

Auto charge recovery

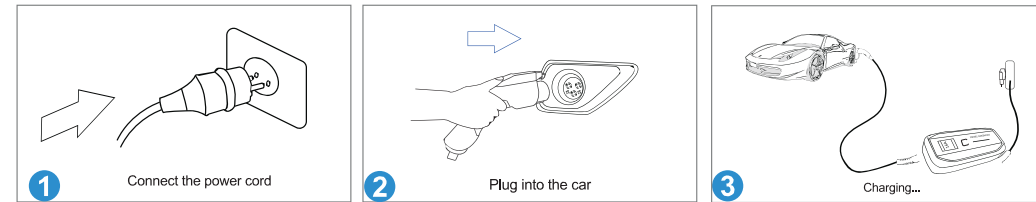
Detection of wiring errors on the infrastructure side and checking of the ground conductor contact

Operating Temperature: -30°C to +50°C

IP65 Protection

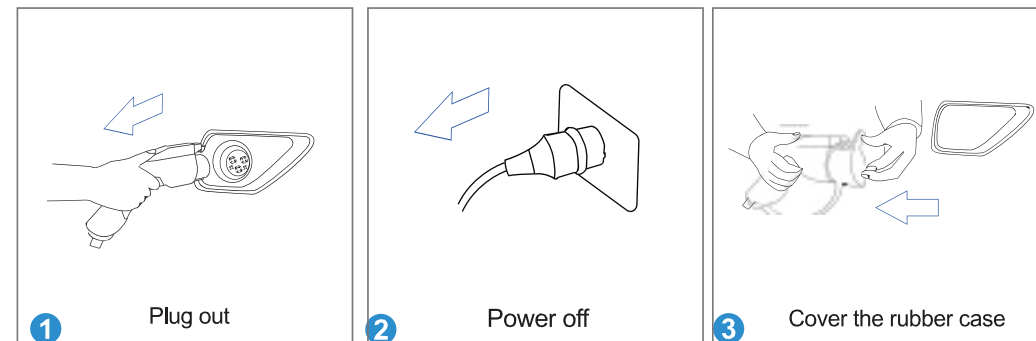
## How to Operate

### How To Start Normal Charge



1. Firmly insert the power plug into outlet. Ensure the socket is rated to a current of 32Amp. The Power Green LED light will illuminate
2. Remove cap & insert the vehicle connector into your vehicle inlet. Ensure the plug is fully seated into the vehicle. The Green LED will illuminate
3. The device starts charging automatically when the green LED light starts to blink.

### How To Stop Normal Charge



1. Disconnect the charging plug from the vehicle
2. Close protective cap of the EV charger plug
3. Disconnect power plug from the outlet