



KWIK PORTABLE Type 2 EV Charging Cable

22kW, 32Amp

DATA SHEET



CHARGE FASTER, DRIVE FURTHER

evse.com.au

sales@evse.com.au

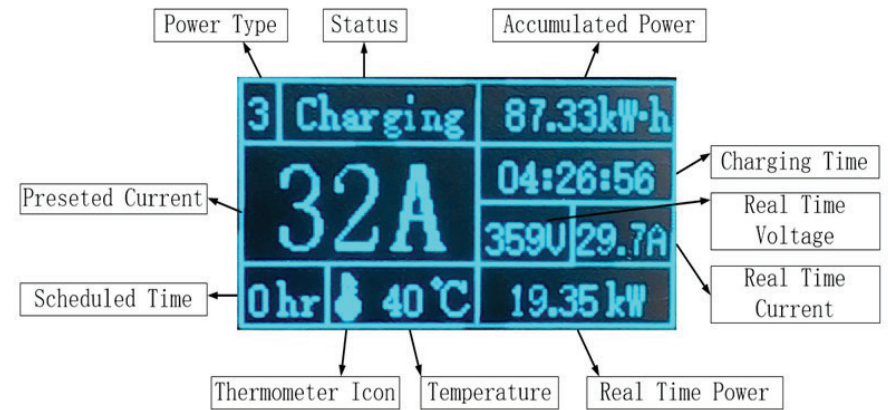
1300 406 210



Functions

AMPS Press “AMPS” button to set Charging Current

TIME Press “TIME” to schedule the charging Start Time (Max 6 hrs later)



Specification

- Input: 6A—32A AC
- Output: 6A—32A AC
- Charging power range: 3.5-22kW
- Integrated Residual Current Device (RCD)
- Operating Temperature: -25 to +50
- IP Rating: IP 65
- Meets Standards: IEC 62752
- CE Approved

- A. OLED Display
- B. Set Charging Current
- C. Schedule Charging Time
- D. Wall mount base
- E. LED Indicator

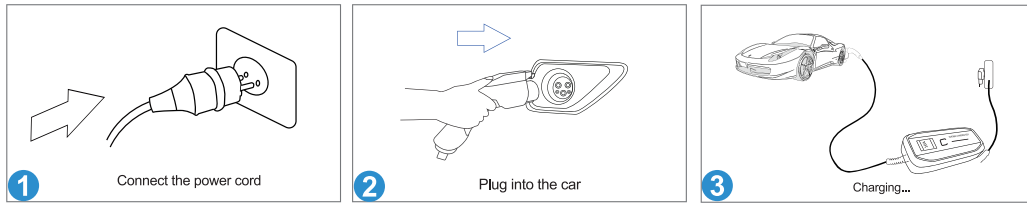


⚠ WARNINGS

1. Make sure the ground wire is available in your wall outlet
2. Do not use if EVSE, plug or cable is damaged
3. Only for charging the compatible electric vehicle
4. Monitor EVSE until OLED display status is “Charging”

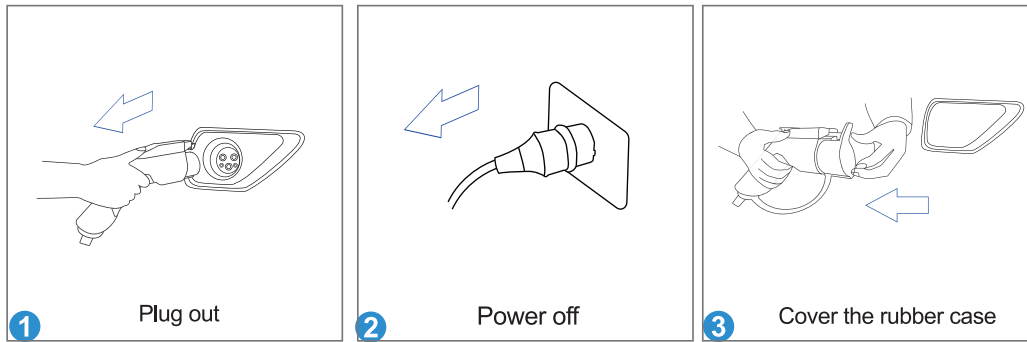
How to Operate

How To Start Normal Charge



1. Firmly insert the power plug into outlet. Ensure the socket is rated to a current of 32Amp. The Power Green LED light will illuminate
2. Remove cap & insert the vehicle connector into your vehicle inlet. Ensure the plug is fully seated into the vehicle. The Green LED will illuminate
3. The device starts charging automatically when the green LED light starts to blink.

How To Stop Normal Charge



1. Disconnect the charging plug from the vehicle
2. Close protective cap of the EV charger plug
3. Disconnect power plug from the outlet
4. Store charger in optimal operating temperature, ensuring no unwanted debris are located on, or near the connecting ports

| Normal Working Status Chart | | | | | |
|-----------------------------|--|-----------------------|------------------------|-------------------------|----------------------------|
| "Status" Area | Status Description | "Scheduled Time" Area | Left button for "Time" | Right Button for "Amps" | LED Light Circle |
| Ready | Ready and not connect to EV yet | 0-6 | Available | Available | Blue light static |
| Connected | Connected with EV and not start charging | 0 | Not available | Not available | Blue light slowly flashing |
| Waiting | Connected with EV and waiting for the scheduled time | 1-6 | Not available | Not available | Blue light slowly flashing |
| Charging | Connected with EV and charging | 0 | Not available | Not available | Blue light running |

| Automatic Recovery Faulty Status Chart | | | | |
|--|--------------------|-------------------------|---------------|----------------------------------|
| "Preset Current" Area | "Thermometer Icon" | LED Light Circle | "Status" Area | Status Description |
| Normal | Static bright | Red light fast flashing | Err128 | CP Signal Faulty |
| Normal | Static bright | Red light fast flashing | Err112 | CP Signal Faulty |
| Normal | Static bright | Red light fast flashing | Err082 | CP Signal Faulty |
| Normal | Static bright | Red light fast flashing | Err052 | CP Signal Faulty |
| 6A | Flashing | Red light fast flashing | Waiting | The temperature of PCB above 85℃ |
| 6A | Flashing | Normal | Normal | The temperature of PCB above 75℃ |

| Non-Automatic Recovery Faulty Status Chart | | |
|--|--------------------------------|---------------|
| LED Light Circle | Full Screen | Status |
| Red light fast flashing | Power Leak!!!Please Check!!! | Power leakage |
| Red light fast flashing | Over Current!!!Please Check!!! | Over-current |